



# BEYOND WORDS

2020 ANNUAL REPORT

The  
Memorial Foundation



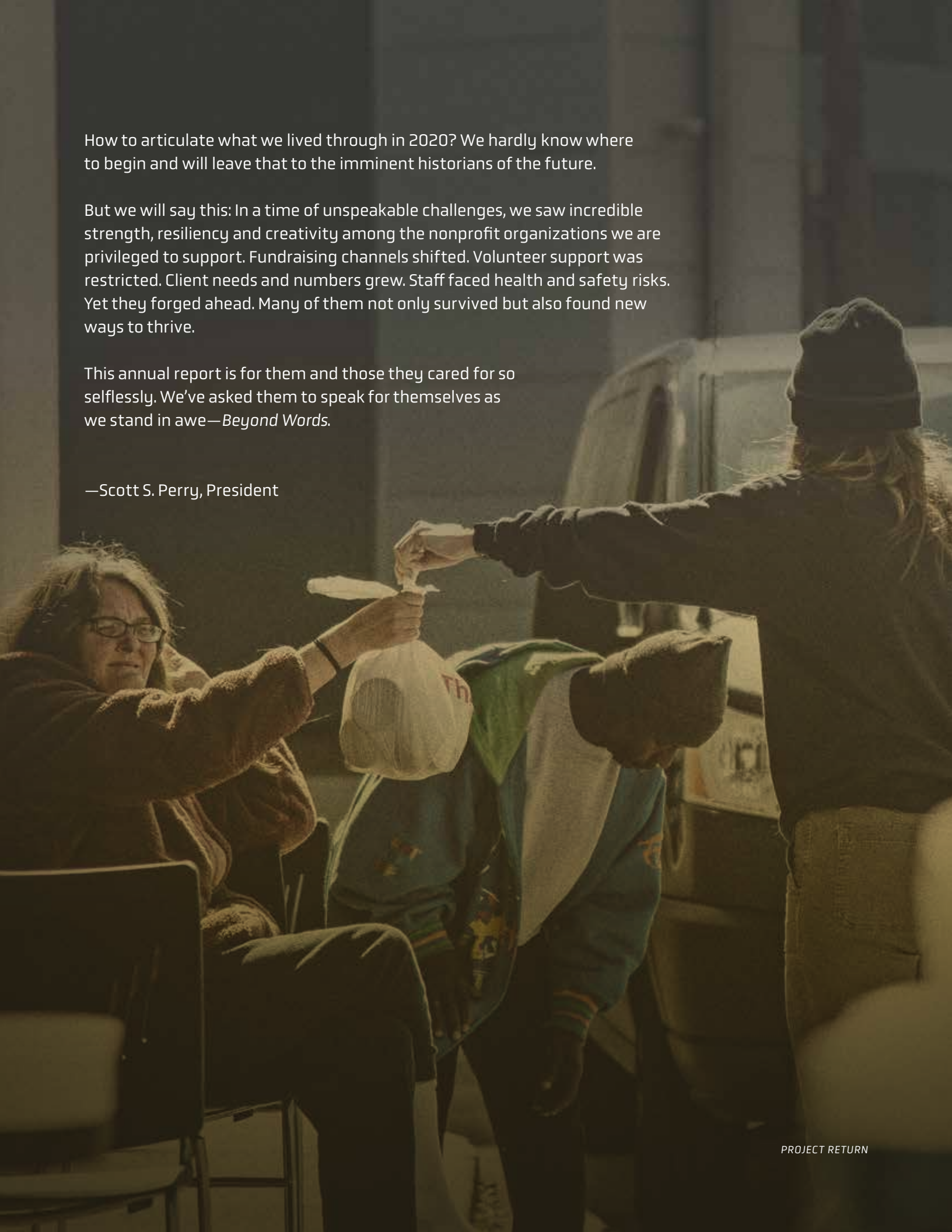


How to articulate what we lived through in 2020? We hardly know where to begin and will leave that to the imminent historians of the future.

But we will say this: In a time of unspeakable challenges, we saw incredible strength, resiliency and creativity among the nonprofit organizations we are privileged to support. Fundraising channels shifted. Volunteer support was restricted. Client needs and numbers grew. Staff faced health and safety risks. Yet they forged ahead. Many of them not only survived but also found new ways to thrive.

This annual report is for them and those they cared for so selflessly. We've asked them to speak for themselves as we stand in awe—*Beyond Words*.

—Scott S. Perry, President



PROJECT RETURN

## THE UNPRECEDENTED SCOPE OF 2020'S CRISES DAWNS

“On March 5, 2020, I knew life would be different. I contacted two medical doctors and asked each what they were expecting with COVID. Their responses rattled me to the core and forecasted what was to come.”

NeedLink—Lee Anne Wills, Executive Director

“March 13, 2020 was a grim day. Our former CEO and I had a frank discussion about the safety of our clients, residents, and staff. Without any concrete information, it was difficult to know the right path.”

Operation Stand Down—Eden Murrie, CEO



“It all became vividly real as we divided the staff up into shift teams and cross-trained one another so that Siloam could continue to serve vulnerable patients if staff were quarantined, sick, or hospitalized.”

Siloam Health—Dr. Morgan Wills, CEO & President

“The city was a ghost town, and its pedestrians—especially those who'd just been released from incarceration—were refugees. It was unlike anything we'd ever experienced.”

Project Return—Bettie Kirkland, CEO



THEN CAME THE WORRIES.  
WILL WE SURVIVE?  
WILL THE PEOPLE WE SERVE?

“We definitely worried about the pandemic’s impact on our contributed income. We quickly reimagined program delivery virtually. Our donors supported us every step of the way.”

PENCIL—Angie Adams, CEO

“Many of our families are in a constant state of survival. We shifted from providing after-school programming to prioritizing basic needs—delivering books, activities, meals and hope to families’ doorsteps.”

Youth Encouragement Services—Viva Price, Executive Director



“Fortunately, careful stewardship of our resources in recent years, disciplined—and sometimes difficult—transfers to reserves, and generous donor support enabled our Y to endure.”

YMCA— Dan Dummermuth,  
President and CEO



“I never thought for a moment we would not survive. I knew almost immediately our programs and services would change forever.”

FiftyForward—Sallie Hussey, Executive Director





THE CHALLENGES WERE GREAT

“  
In Tennessee, we faced eight weeks of devastating spring storms. Across the country, the Red Cross provided more nights of shelter than any other year in history.”

American Red Cross—Leigh Elliott, Regional Philanthropy Officer

“  
Not everyone has been ‘safer at home’ throughout the pandemic, especially abuse victims and survivors. Fortunately, our staff and clients demonstrated unbelievable resilience and strength.”

Sexual Assault Center—Rachel Freeman, President

“  
We had to learn how to prepare thousands of healthy meals each week without the supportive hands of our volunteers.”

Nashville Food Project—Teri Sloan, Chief Operations Officer

“  
Required social distancing, increased cleaning protocols, canceled events, and discontinuing volunteer services due to the pandemic put unusual strain on the Mission. But through it all, we stood firm and stayed strong.”

Nashville Rescue Mission—Glenn Cranfield, President and CEO

THE WILL TO OVERCOME THEM WAS GREATER

“  
While our thousands of volunteers build capacity for our partners each year, their impact was more evident than ever in 2020 as they responded to the tornado, COVID-19, and the Christmas Day bombing.”

Hands On Nashville—Lori Shinton, President and CEO

“  
We ramped up our operations to distribute 1 million pounds of food each week through targeted distribution to high-risk communities.”

Second Harvest Food Bank of Middle Tennessee—  
Nancy Keil, President and CEO

“  
More Latinxs learned about our wraparound services as we began to provide rent or mortgage assistance, offer produce boxes and warm meals, and coordinate equitable COVID-19 vaccine distribution.”

Conexión Américas—Juliana Ospina Cano, Executive Director

“  
Through it all, our staff persevered like the heroes they are – not complaining, showing up every day, and caring for others who were sick at great risk to their own health.”

Hope Family Health—Jennifer Dittes, PA-C, CEO



AND WE EMERGED STRONGER THAN EVER

“We created learning pods to keep our most at-risk students from falling behind and found that attendance, behavior, and academic achievement improved greatly.”

*Backfield In Motion—Todd E. Campbell, Ed. D., CEO*



“We will continue expanding our online capacity to train volunteer mediators—and to provide free remote mediation for communities that would otherwise be excluded from this gentler form of justice.”

*Nashville Conflict Resolution Center—Sara Figal, Executive Director*

Total funds provided  
**\$5.97M**

“We saw firsthand the transformative power of human connection and ‘loving thy neighbor’ in the hardest of times. We emerged with a deepened commitment to help families rise above generational poverty.”

*Martha O'Bryan Center—Marsha Edwards, President and CEO*



“We plan to take all of these lessons learned into the future. As hard as it has been, I believe we will be better because of 2020.”

*Faith Family Medical Center—Laura Hobson, President*





## 2020 GRANTEE LISTING

A Soldier's Child  
A Step Ahead Foundation of Middle Tennessee  
A.B.L.E. Youth  
Achilles International – Nashville Chapter  
Adult Education Collective Impact  
Adventure Science Center  
AGAPE  
Alignment Nashville  
American Cancer Society–Greater Nashville Area  
American Red Cross–Nashville Area Chapter  
Andrew Jackson Foundation  
Angel Heart Farm  
Aphesis House  
Ashley's Place  
Backfield in Motion  
Begin Anew  
Belcourt Theatre  
Bethlehem Centers of Nashville  
Big Brothers Big Sisters of Middle Tennessee  
Big Payback Middle Tennessee  
Borderless Arts Tennessee  
Boy Scouts of America, Middle Tennessee Council  
Boys & Girls Clubs of Middle Tennessee  
Bridge Ministry  
Building Lives Foundation  
Byrum–Porter Senior Center  
CASA Nashville  
Center for Nonprofit Management  
Charis Health Center

Cheekwood  
Christian Cooperative Ministry  
Communities In Schools of Tennessee  
Community Care Fellowship  
Community Life Bridge  
Conexion Americas  
The Contributor  
Cottage Cove Urban Ministries  
Council on Aging of Greater Nashville  
COVID–19 Response Fund  
CrossBRIDGE  
Crossroads Campus  
Cumberland Crisis Pregnancy Center  
Daystar Counseling Ministries  
Dismas  
Easter Seals Tennessee  
Elijah's Heart  
End Slavery Tennessee  
Equal Chance for Education  
Faith Family Medical Center  
Family & Children's Service  
The Family Center  
Fannie Battle Day Home for Children  
Fellowship of Christian Athletes  
FiftyForward  
First Steps  
4:13 Strong  
Friends of Mill Ridge Park  
Friends of Sumner Regional Medical Center

Friends of the Gallatin Public Library  
Friends of Warner Parks  
Friendship House  
Frist Art Museum  
Gallatin CARES  
Gallatin Shalom Zone  
Gilda's Club Nashville  
Girl Scouts of Middle Tennessee  
GivingMatters.com  
Goodpasture Christian School  
Gordon Jewish Community Center  
Grace Place Ministry  
Greater Faith Community Action Corporation  
Hands On Nashville  
Harvest Hands Community Development Corporation  
Heimerdinger Foundation  
Hendersonville First Responder Project  
Historic Cragfont  
Historic Rock Castle  
Home Bound Meals Program  
Homework Hotline  
Hope Clinic for Women  
Hope Family Health Services  
Hospital Hospitality House of Nashville  
Imagination Library of Middle Tennessee  
Insight Counseling Centers  
Inspiritus–Middle Tennessee  
Interfaith Dental Clinic of Nashville  
Jason Foundation  
Junior Achievement of Middle Tennessee  
King's Daughters Child Development Center  
Leadership Goodlettsville  
Make–A–Wish Middle Tennessee  
Martha O'Bryan Center  
Mary Parrish Center  
McNeilly Center for Children  
Men of Valor  
Mending Hearts  
Mental Health America of Middle Tennessee  
Monroe Harding  
Monthaven Arts and Cultural Center  
Nashville Adult Literacy Council





2020 GRANTEE LISTING continued

Nashville Ballet  
Nashville Chamber Public Benefit Foundation  
Nashville Children’s Theatre  
Nashville Coaching Coalition  
Nashville Community Bail Fund  
Nashville Conflict Resolution Center  
Nashville Food Project  
Nashville International Center for Empowerment  
Nashville Launch Pad  
Nashville Public Education Foundation  
Nashville Public Library Foundation  
Nashville Public Television  
Nashville Rescue Mission  
Nashville Symphony  
Nashville Youth for Christ  
National Museum of African American Music  
NeedLink Nashville  
New Beginnings Center  
The Next Door  
Nurses for Newborns of Tennessee  
Nurture the Next  
Oasis Center  
100 Black Men of Middle Tennessee

Open Table Nashville  
Operation Andrew Group  
Operation Stand Down Nashville  
Orange Heart Medal Project  
Our Kids  
Oz Arts  
PENCIL Foundation  
Pet Community Center  
Pope John Paul II High School  
Poverty and the Arts  
Preston Taylor Ministries  
Project Connect  
Project Return  
Project Transformation Tennessee  
Raphah Institute  
REBOOT Recovery  
Rebuilding Together–Nashville  
Refuge Center for Counseling  
Rejoice School of Ballet  
Renewal House  
Saddle Up!  
Safe Haven Family Shelter  
Salama Urban Ministries

Salvus Center  
Scott Hamilton CARES Foundation  
Second Harvest Food Bank of Middle Tennessee  
Sexual Assault Center  
Show Hope  
Shower the People  
Siloam Health  
Simon Youth Foundation  
Skyline Auxiliary  
Small World Yoga  
Society of St. Andrew  
SongwritingWith:Soldiers  
Southeastern Council of Foundations  
Special Needs Sports Foundation  
St. Luke’s Community House  
STARS Nashville  
Sycamore Institute  
Tennessee Breast Cancer Coalition  
Tennessee Coalition to End Domestic and Sexual Violence  
Tennessee Environmental Council

Tennessee Historical Society  
Tennessee Immigrant and Refugee Rights Coalition  
Tennessee Justice Center  
Tennessee Justice for Our Neighbors  
Tennessee Medical Foundation  
Tennessee Performing Arts Center  
Tennessee Prison Outreach Ministry  
Tennessee Senior Olympics  
Tennessee Wildlife Federation  
University School of Nashville  
Urban Green Lab  
Urban Housing Solutions  
Victor S. Johnson III Nashville Children’s Alliance  
Welcome Home Ministries  
Westminster Home Connection  
Why We Can’t Wait  
YMCA of Middle Tennessee  
Youth Encouragement Services  
Youth Villages  
YWCA of Nashville and Middle Tennessee





BOARD MEMBERS

- Alfonzo Alexander**  
President  
NASBA Center For  
The Public Trust

**Frank M. Bumstead**  
Chairman  
Flood, Bumstead,  
McCreedy & McCarthy, Inc.

**Varina F. Buntin**  
Community Leader

**Allison DeMarcus**  
Community Leader

**Charles W. Fentress**  
Consultant  
Government Affairs

**Frank E. Gordon**  
Managing Partner  
Crofton Capital

**Frank Grace, Jr.**  
Retired Partner  
Waller
- Beth B. Little**  
Community Leader

**Drew R. Maddux, Sr.**  
President  
Maddux Realty &  
Construction Co., Inc.

**David E. McKee, M.D.**  
Physician  
Plastic & Reconstructive  
Surgery

**Judge George C. Paine, II**  
Retired Chief Judge  
United States Bankruptcy  
Court Middle Tennessee  
District

**J. Edward Pearson**  
President and COO  
Healthstream, Inc.

**H. Eddie Phillips**  
Chairman  
E. Phillips Development
- Gini Pupo-Walker**  
State Director for Tennessee  
Education Trust

**Jo Sanders**  
Community Leader

**Barbara Springer**  
Treasurer  
Dollar General Corp.

**I. Michele Williams, M.D.**  
Medical Director  
Matthew Walker  
Comprehensive Health Center

**S. Fleming Wilt**  
President  
Christie Cookie Co.

*Emeritus Members*

**William P. Puryear**  
Immediate Past Chair

**Charles B. Beck, M.D.**  
**L. Dale Beck, M.D.**



Frank Grace, Jr. (right) has faithfully served as Board Chair of the Memorial Foundation’s Board of Trustees for the past six years. He passes the torch to Dr. David E. McKee, MD (left) to continue the legacy of constant and steadfast stewardship of the Foundation’s mission.

2020 FINANCIAL POSITION

The Memorial Foundation, Inc. and Affiliated Entities  
Consolidated Statement of Financial Position  
For period ending December 31, 2020

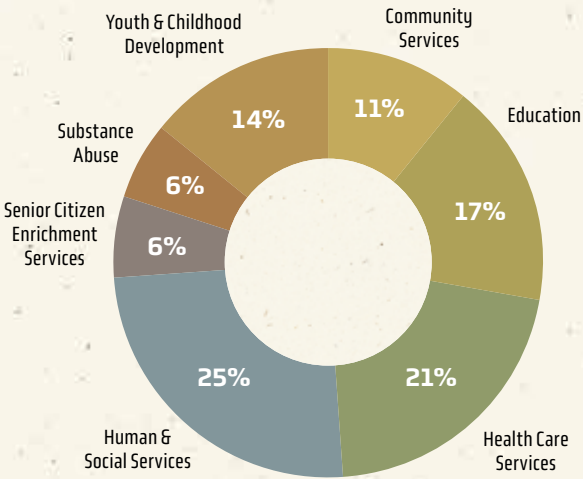
ASSETS	
Cash and short-term investments	\$8,741,348
Investments	117,872,889
Investment – commercial real estate, net	8,229,964
Accounts receivable	104,253
Prepaid expenses	154,904
Furniture and equipment – net	21,909
TOTAL ASSETS	\$135,125,267
LIABILITIES	
Accounts payable and accrued expenses	\$205,739
Grants payable	70,000
TOTAL LIABILITIES	\$275,739
NET ASSETS	
Unrestricted	\$132,295,985
Temporarily restricted	2,553,543
TOTAL NET ASSETS	\$134,849,528
TOTAL LIABILITIES AND NET ASSETS	\$135,125,267

The Memorial Foundation is audited by the independent auditing firm of Kraft CPAs PLLC



1996–2020 GRANTS

Summary of Grants Awarded by Program Area



The Memorial Foundation staff (left to right)

- Jackson Routh**  
Vice President, Programs and Grants
- Lauren Willoughby**  
Program Associate
- Joyce A. Douglas**  
Executive Assistant
- Judy Milliken**  
Vice President, Finance
- Scott S. Perry**  
President



